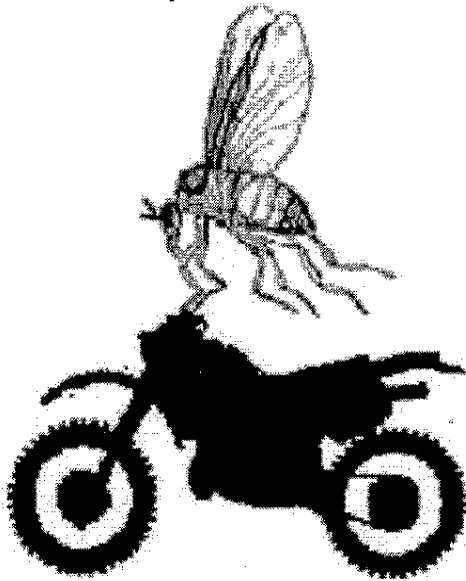


Capital Area Trail Riders Association



Presents the 2008
Black Fly
Hare Scramble
and
Pee Wee Scramble



Pee Wee Scramble

Saturday - May 17, 2008

- 10 a.m. sign-up.
- AMA & NETRA Membership Required
- 12 noon start for Pee Wee IV & V
- 1:30 p.m. start for Pee Wee I, II & III
- \$25 for all Pee Wee classes
- 100% fun and ride-able course

Trail Boss: Mark Charette - (518) 237-7268

Black Fly Hare Scramble

Sunday - May 18, 2008

- 7 a.m. sign-up, 9 a.m. start for Big Wheel, Mini A, Mini B and Girls
- 9 a.m. sign-up, 11 a.m. start for Masters, Super Senior, Women, Novice, Sportsman, Vintage* and Post-Vintage**
- 11 a.m. sign-up, 1:30 p.m. start for AA, Expert and Amateur
- \$30 for 9:00 a.m. race
- \$40 for 11:00 a.m. and 1:30 p.m. races

Trail Boss: Bill Steele - (518) 225-8366
No calls after 9:00 p.m.

\$5 Parking Donation

- Directions: I-87 N from Albany, NY to exit 12, Route 67 W to Route 147 N follow NETRA arrows.
- Current AMA and NETRA (or other recognized district) memberships required.
- Both AMA and NETRA membership available, along with NETRA one-day passes.
- Minors must have a parent present or a notarized consent form to participate.
- NETRA transponder (\$20), required for scoring, and bikes must have proper number and backgrounds.
- NETRA Sound Test rules will be enforced for the Hare Scramble, 96 dbA limit.
- Primitive camping available Friday and Saturday night in designated area only.
- Fires in designated fire pits only, no open fires.
- Quiet hours after 10:00 p.m. strictly enforced, all tents down by 9:00 a.m. Sunday for parking.
- Concessions available all day Saturday and Sunday.
- No dogs, bicycles, pit riding, fireworks or pre-riding allowed... NO EXCEPTIONS!

* Vintage class: 1978 and older motorcycles, non-NETRA points class.

** Post-Vintage class: 1979 to 1988 motorcycles, non-NETRA points class.